

Kansas Community Health Worker (CHW) Core Competency Education

Learnworlds Online Learning Platform

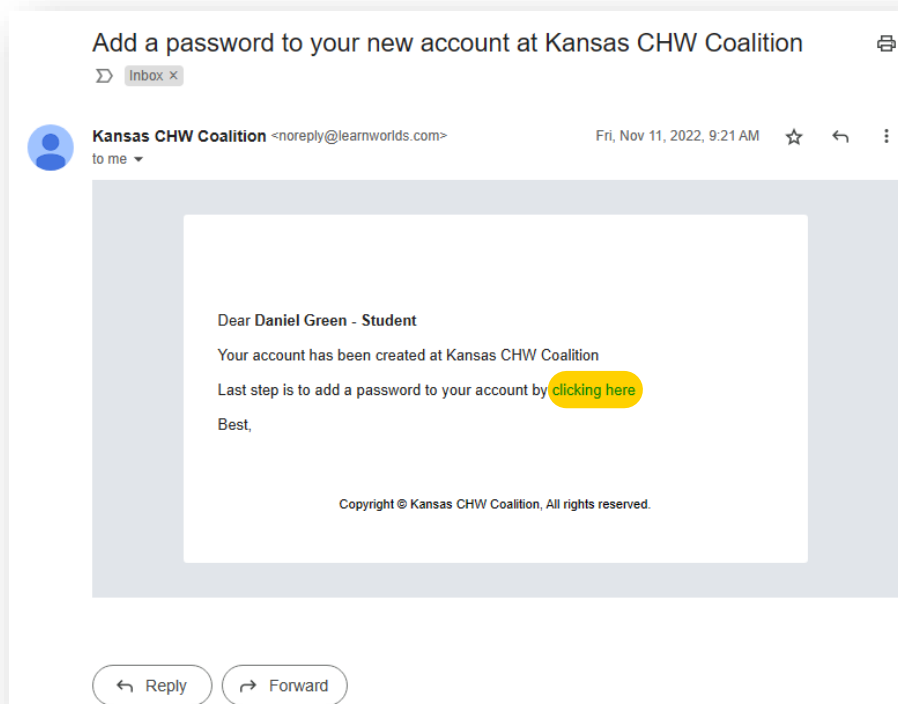
Starting in June 2023, we've transitioned to an innovative online learning platform that will enhance the way CHW students travel on their journey to certification.

LearnWorlds will serve as a hub for all necessary student resources, ensuring easy access to Zoom sessions, assignments, and supplementary materials - eliminating the hassle of searching through emails or looking through Word Documents. Additionally, students and instructors will have enhanced abilities to track progress, submit documents, and revisit previous class sessions for comprehensive review.

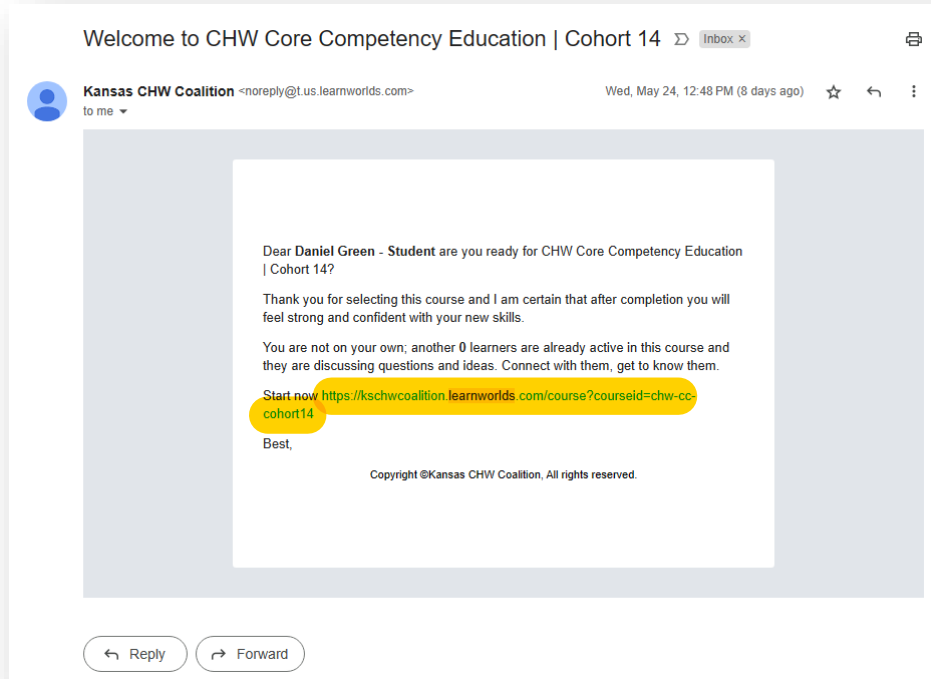
This approach to online learning empowers CHW students to take ownership of their education while fostering a dynamic and interactive learning experience.

Getting Started

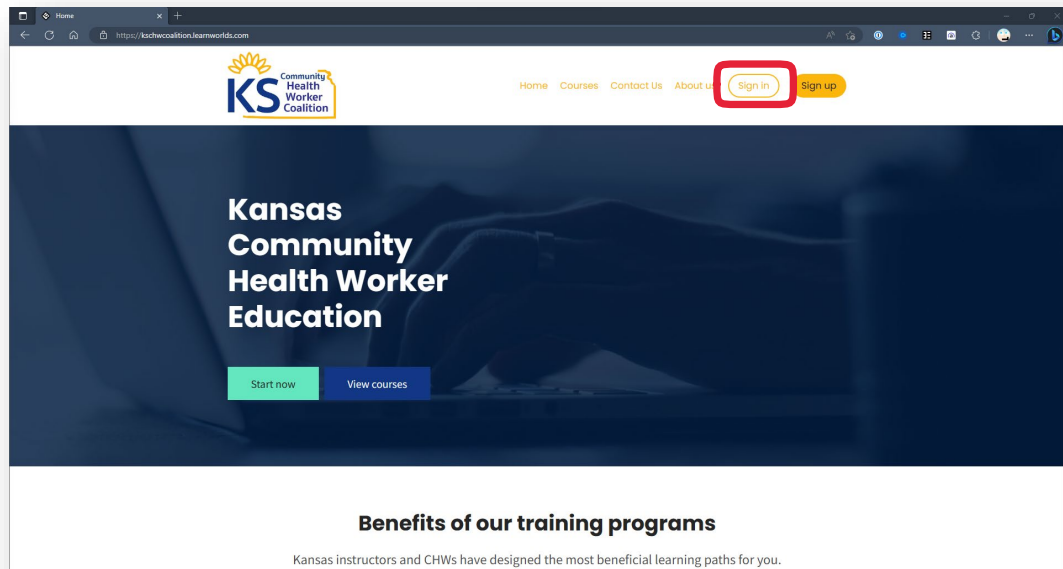
- 1) You will receive an email from the Kansas CHW Coalition LearnWorlds Platform with instructions and a link to create a password for your new account.



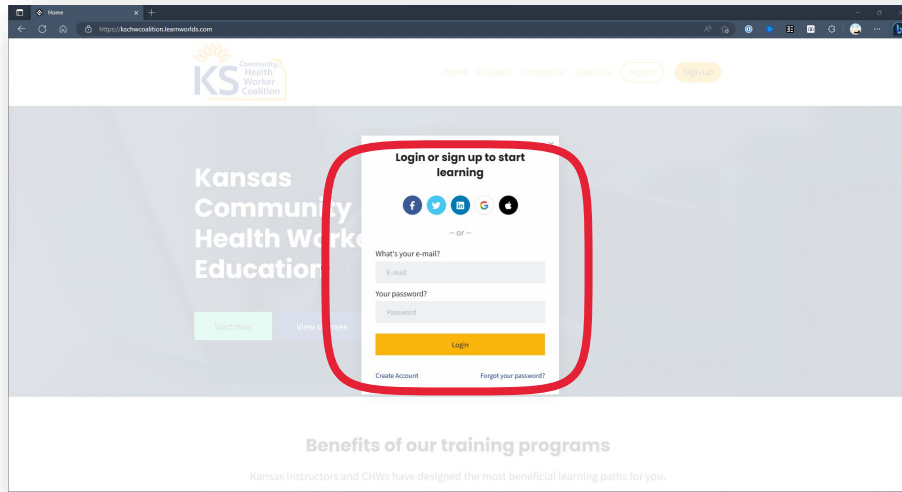
- 2) When enrolled in the CHW Core Competency Course, you will receive another email which contains the direct link to your course.



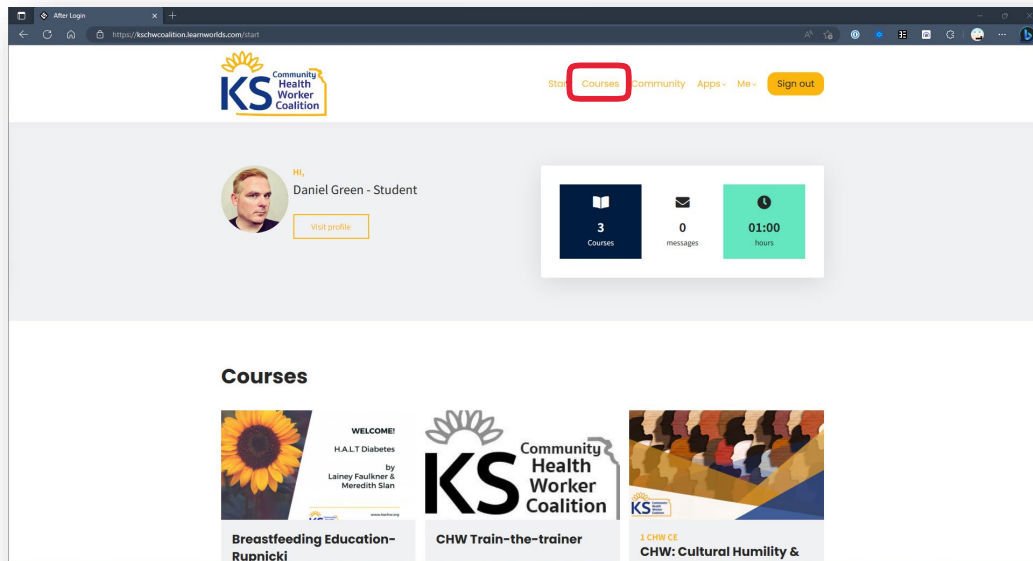
- 3) To access the course use the direct link in your enrollment email or navigate to <https://kschwcoalition.learnworlds.com/> and click **Sign In** in the top right-hand corner.



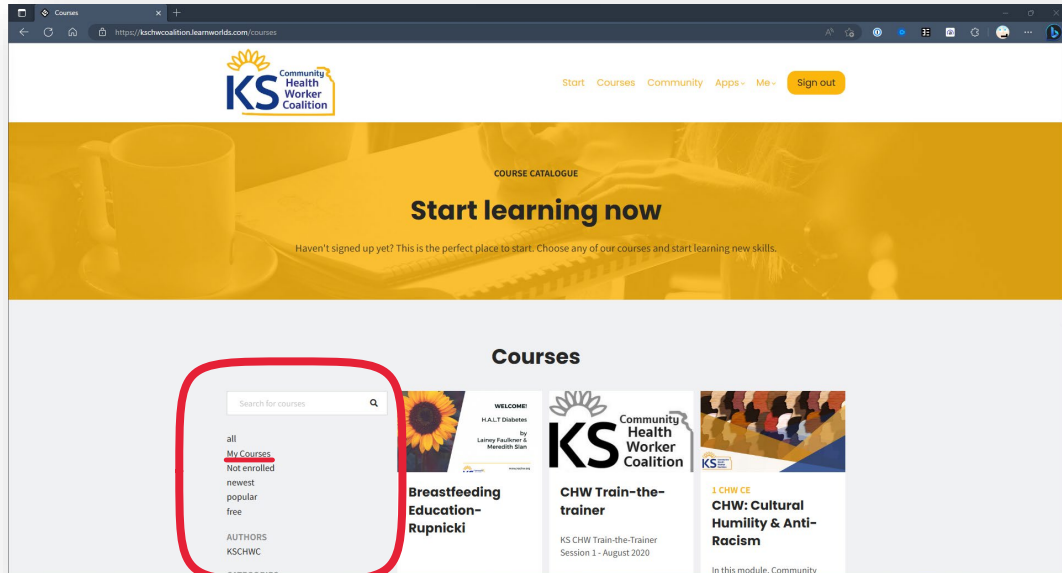
4) Enter your email and password on the screen that opens up



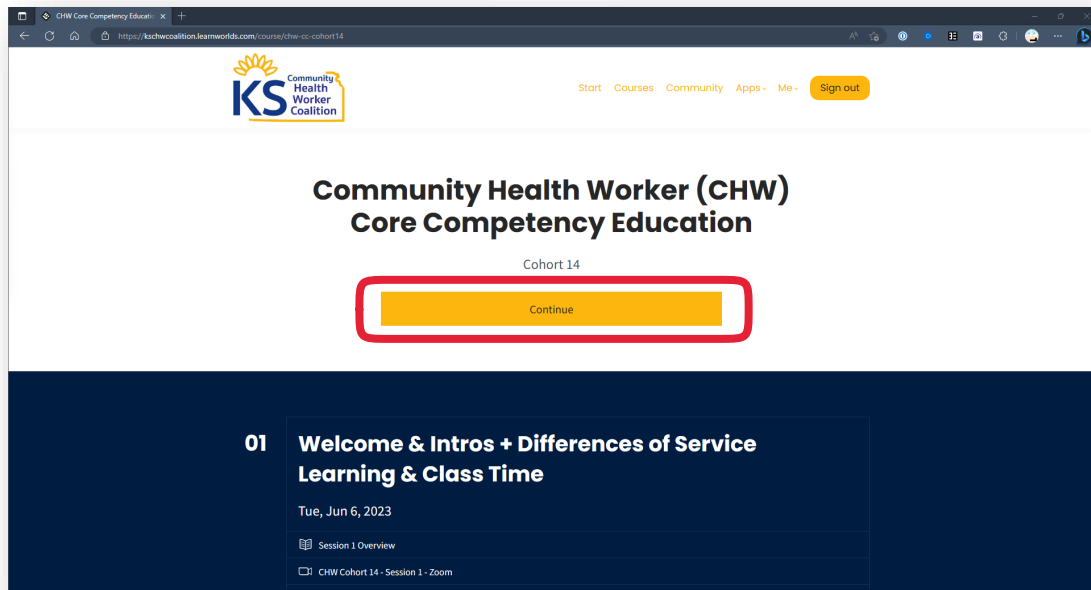
5) Once logged in, click on **Courses** in the top navigation bar



- 6) Next, click **My Courses** from the list on the left-hand side then select the CHW Core Competency Education Course

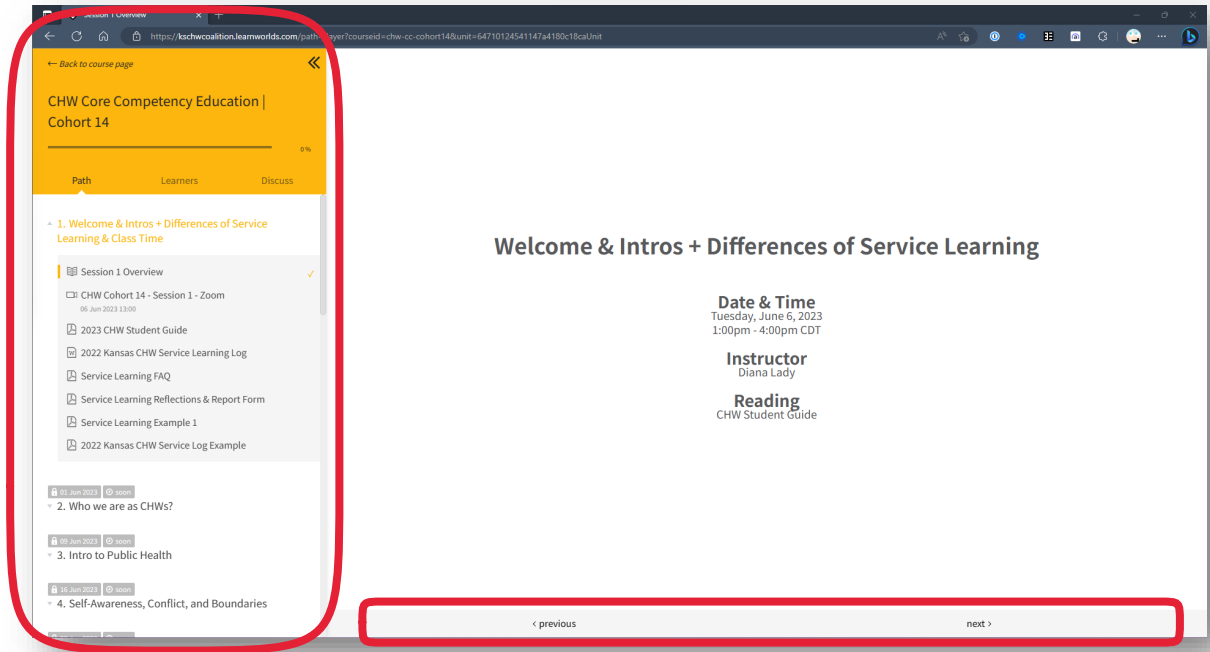


- 7) The course landing page will show an outline of the entire course work, from start to finish. You can click any Unit or Module title to view it in the course player, or simply click **Continue** at the top to pick up where you left off.

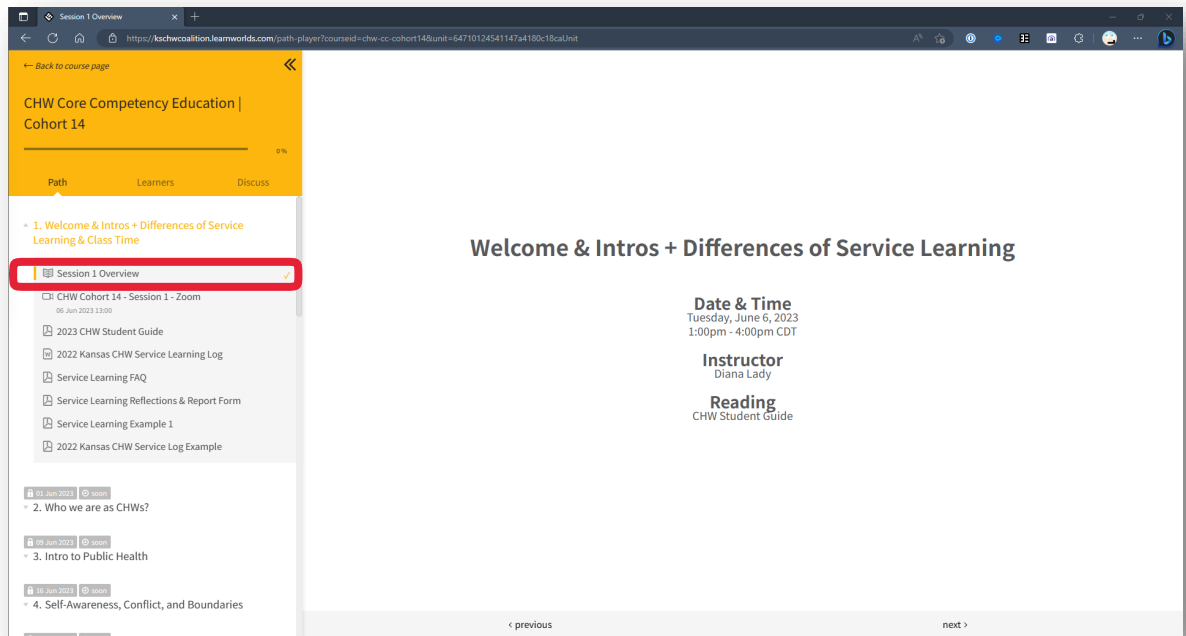


The Course Player

- 8) Use the Course Player to navigate through learning activities using either the Navigation Sidebar or with the < previous and next > buttons on the bottom bar.



- 9) Each class session has an Overview that contains the general information students need to know.



10) Class Session resources are also included for viewing and downloading by clicking the title of the learning activity in the left-hand Navigation Sidebar.

Learning activities that have been reviewed/completed so far will show a ✓ on the right-side.

Service Learning FAQ

CHW Core Competency Education | Cohort 14

Path Learners Discuss

1. Welcome & Intros + Differences of Service Learning & Class Time

- Session 1 Overview ✓
- CHW Cohort 14 - Session 1 - Zoom
- 2023 CHW Student Guide
- 2022 Kansas CHW Service Learning Log
- Service Learning FAQ ✓
- Service Learning Reflections & Report Form
- Service Learning Example 1
- 2022 Kansas CHW Service Log Example

2. Who we are as CHWs?

3. Intro to Public Health

4. Self-Awareness, Conflict, and Boundaries

Service Learning :

- Service-learning (SL) provided an opportunity for CHW to explore different areas of intervention outside the daily routine. Also, SL helps reinforce the skills necessary to be effective as CHW.
- A series of activities that CHWs complete to expand their knowledge and skillset relating to how they can promote health in their community.

KS Community Health Worker Coalition

MISSOURI DEPARTMENT OF HEALTH

Zoom Class Sessions

- Each section also contains the information about that day's Zoom Class Session.
- When the Class Session is Live, you will be able to join the session within LearnWorlds.
- Prior to the scheduled class session, students have the option to add the session to their calendars.

The screenshot shows a web browser window displaying a course page for 'CHW Core Competency Education | Cohort 14'. The left sidebar contains a navigation menu with the following items: '1. Welcome & Intros + Differences of Service Learning & Class Time', 'Session 1 Overview', 'CHW Cohort 14 - Session 1 - Zoom' (highlighted with a red box), '2023 CHW Student Guide', '2022 Kansas CHW Service Learning Log', 'Service Learning FAQ', 'Service Learning Reflections & Report Form', 'Service Learning Example 1', and '2022 Kansas CHW Service Log Example'. Below these are sections for '2. Who we are as CHWs?', '3. Intro to Public Health', and '4. Self-Awareness, Conflict, and Boundaries'. The main content area features a calendar event for '06 Jun 2023, 13:00 - 16:00' titled 'CHW Cohort 14 - Session 1 - Zoom'. The event description reads: 'The Live Session is not ready yet. Please wait for the host to start this session.' and includes an 'Add to Calendar' button. The event card is circled in red.

Students should join class sessions using LearnWorlds whenever possible due to the availability of documents and resources utilized during Class Sessions.